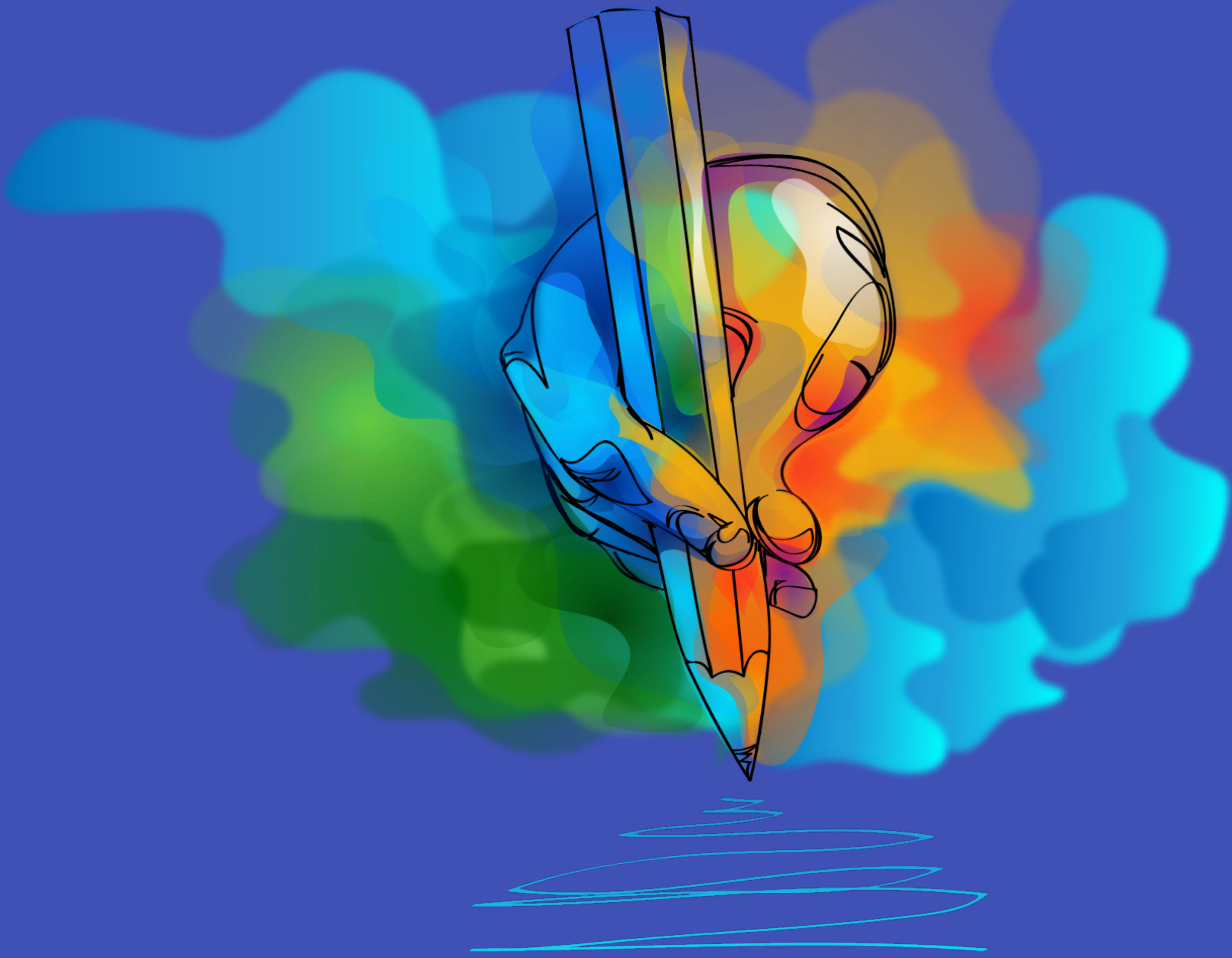


Scoil Mhuire Community School Clane

Competition



Create a Logo

THE BRIEF

Create a new logo that will represent Wellbeing in our School Community.

THE DATE

Closing date for entries: **12 Noon Friday 19th March**

THE PRIZE

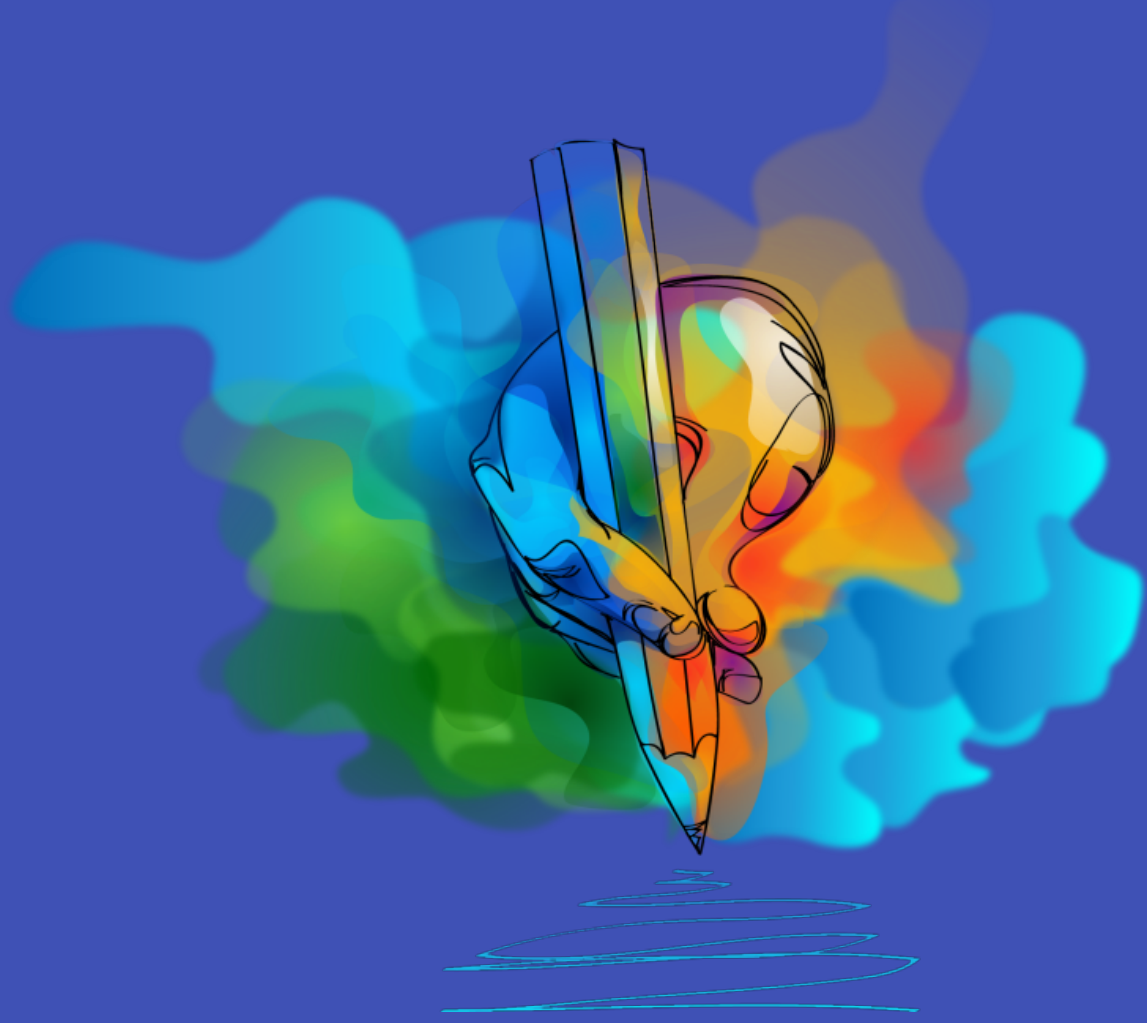
€100 One4all Voucher

The logo for One4all, featuring the text "One4all" in white on a red, rounded rectangular background.

The winning design will be used on materials and resources produced to support wellbeing within our School Community.

Amber Flag Committee - Promoting Positive Mental Health

Information



Create a Logo

Simplicity makes a logo design easily recognizable, versatile and memorable, without being "overdrawn."

An effective logo works across a variety of media and applications.

Wellbeing

Everyone experiences **vulnerability and a need for care** at some stages in their journey through life. All children and young people may be vulnerable at different stages of their development, and their sense of wellbeing may vary from time to time. **Developing, nurturing and sustaining our wellbeing is a lifelong process.**

The following **definition of Wellbeing** aims to take account of its multi-dimensional nature (**World Health Organisation (WHO), 2001**).

"Wellbeing is present when a person realises their **potential, is resilient** in dealing with the normal stresses of their life, takes care of their **physical wellbeing** and has a **sense of purpose, connection and belonging** to a wider **community**. It is a fluid way of being and needs **nurturing throughout life**".

The Pieta Amber Flag Initiative recognises the individual efforts of schools, companies and groups to **create healthy and inclusive** environments that **support mental well-being**. It unites these groups in their efforts to work together towards a **happier, healthier Ireland** and **eradicates the stigma** associated with **mentalhealth issues**.